

Windward Academy

ELITE

PERFORMANCE

GROUP

A Daytime Tennis Program

Building *winner*s
on and off the court



Will Wright, Director • wcvgorams@hotmail.com
WindwardTennisAcademy.com

Windward Elite Performance Group (EPG)

Formerly our Home-School Group

Windward Academy offers a performance program that provides training for state-level tournament players to top national- and international-level players.

Students are trained on the technical, mental, and strategic aspects of the game. The program's foundation is built around Windward's philosophy of building winners on and off the court. We believe that fundamental to tennis success is solid academic achievement. The program is designed for the focused and self-motivated individual. Match-play and further training such as private lessons is recommended. The program provides a central core based on the student's practice and tournament schedule which provides sufficient time for the student to focus on academics.

Windward students are well known in the South and the nation for their great work ethic and intensity. Our players are well rounded, exemplified by the numerous sportsmanship awards our players receive each year.

The student will meet with the coaches to plan goals and schedules, to aide development.



Education Options

As outlined in our philosophy, Windward Academy is committed to putting education first. Our students have a reputation for being well disciplined and academically successful. We don't expect or accept anything less.

Most of our EPG participants have been home-schooled in the past. Popular programs include:

- ✓ Laurel Springs • www.laurelsprings.com
- ✓ Calvert • www.calvertschool.org
- ✓ Keystone • keystonehighschool.com

Chalk 2 Champions Option

Windward's recommended program

Chalk 2 Champions will provide a consolidated, fully accredited academic program at their facility in Alpharetta. Instruction in all subject areas will be delivered from proficient, professional teachers. Students can take all their course work or select only those courses requiring parental assistance. Standardized tests will be administered and all student records and transcripts will be provided. This program offers an unequalled and affordable solution to meet the demands of a student unable to maintain a traditional school schedule.

Parents can be assured that all academic standards will be met and exceeded.

Melinda Willis, Director
770.313.7589

High School Early Release Option

Windward's program for traditional path

High school students with exceptional sporting abilities can petition their school to allow them early release and allowing them to participate in EPG.



Will Wright

EPG Director



Background. Will grew up in Lincoln, England. He played #1 singles and doubles for Jacksonville State University (JSU) for three years. As assistant tennis coach for the JSU Men's Team in 2003 and 2004, the team finished second and first respectively in their conference and reached the Division 1 Regionals in 2004.

Experience. Will has eight years experience teaching in Spain, England and the U.S., and is one of the top junior coaches in the South. As a USPTR certified professional he works closely

with Cannon Campbell, below, in training our elite juniors, currently working with many top southern and national players. In 2008 he coached 12 players in the top 50 in the nation in their age group.

Achievements. Will was selected as the 2007 Georgia Davis Cup team coach. As director of the daytime program, his players have won two First Place, six Second Place and three Third Place finishes in national championships. They have won eight National Opens. His EPG players have also won over 50 Southern and State Championships in the first three years of the program. Will has built one of the strongest programs in the South. In 2008 he coached the Southern 14s team in international competition against Mexico, USA and Canada.

Cannon Campbell

Owner and Director, Windward Academy

Background & Experience. Cannon is a USPTA P1 certified professional, an owner of Windward Lake Club and Director of Windward Tennis Academy. With more than 26 years of tennis experience as both a player and coach, Cannon has excelled as a nationally ranked junior and a nationally recognized junior tennis coach. Working with more than 140 state- and southern-ranked as well as nationally and internationally ranked players, Cannon specializes in the development of elite junior players.



Achievements. Cannon is a Wilson National advisory staff member and Nike-sponsored coach. In 2007 and 2008 he coached the Boys and Girls 16 Southern Intersectional Team to National Championship wins in Shreveport, La. Cannon also has coached the Georgia Junior Davis Cup team to victory in both 2007 and 2008.

Cannon has coached some of the finest Junior players in the South:

Bradley Cox, 145th in the ITF Junior rankings, University of Kentucky Tennis Team, World-ranked in men's tennis;

Kate Fuller, ranked 140th in ITF Junior rankings;

Jordan Cox, Wimbledon Junior runner-up, 2009

And many other top national juniors

Henry Darko

USPTA Pro

Henry joined the Windward Team in early 2007. He reached 270 ATP and was top 15 in the world junior rankings. He currently teaches and trains with all of Windward's high-level juniors. His incredible work ethic and training by the world's top coaches have made Henry a tremendous addition to our Windward staff.



Competitive Edge Sports (CES)

Windward's Conditioning Program

CES is the undisputed leader in sports performance training for professional

and amateur athletes. They train elite-level athletes in sport-specific, position-specific, and movement-specific drills. The athletes already know their sport and CES teaches their bodies how to perform at a new level, gaining speed, agility, and strength.



EPG Schedule

Fall 08/ Spring 2010

Monday	1–3:30 PM	Tennis Training with Will
	3:45–4:30 PM	Strength and Conditioning Training
	*5–7 PM	Advanced or Select
	*7–9 PM	Elite Academy
Tuesday	1–3:30 PM	Tennis Training with Will
	3:30–4 PM	Core Stability
	*7–9 PM	Elite Academy
Wednesday	1–3:30 PM	Tennis Training with Cannon
	3:45–4:30 PM	Strength and Conditioning Training
	*5–7 PM	Advanced or Select
	*7–9 PM	Elite Academy
Thursday	1–3:30 PM	Tennis Training with Will
	3:45–4:30 PM	Strength and Conditioning Training
Friday	12–2 PM	Match play
Monday–Friday	2–4 PM	EPG Early Release participants will train on court with staff.

***Saturday** Players in Advanced or Select have playdays on some weekends. Please see windwardtennisacademy.com for details.

**Additional training available through evening academy sessions at no extra fee.*

“Windward’s day program has provided the balanced schedule I need to succeed on and off the court.”

—Kate Fuller, EPG member, world-ranked 140th in ITF Junior rankings






EPG Fees

The Windward program comes at a very competitive price. Here you can see how much training is included. The fee is a monthly membership to the EPG. A Windward Lake Club membership is required.

EPG: \$750 per month, August through May

Includes, per week:

-  12 hours on court with Will and staff
-  Three 45-minute, and 1 half-hour strength and conditioning training sessions
-  At least four hours Elite/Select/Advanced Academy.

EPG Early Release students: \$500 per month, August through May

Includes, per week:

-  10 hours on court with Will and staff
-  At least four hours Elite/Select/Advanced Academy.

The evening Academy Sessions are available to students but are considered optional. The EPG program when supplemented by private lessons and match practice is considered a desirable amount of quality practice.

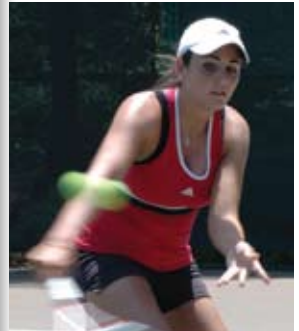


INCLEMENT WEATHER days will be spent training at CES (page 5), utilizing video analysis provided by High-Tech Tennis, participating in theory sessions, and occasionally we will plan social events.

REFUNDS for missed days will not be awarded. A player that incurs an injury preventing him or her from participating in that month will be refunded with Will Wright's approval.

Windward Lake Club is a beautiful swim and tennis facility
with 20 hard courts.

In 2006 Windward Lake Club was recognized as
the National Large Facility of the Year by the USTA.



Windward Lake Club

2001 Lake Windward Drive
Alpharetta, GA 30005
770.442.5783

